

20th September 2024

Dear Parents / Carers,

It is lovely to see the work the children have been doing this week which reflects our school vision. The children in Early Years finding out about their feelings and exploring their uniqueness is a great way to love yourself.

There is a lot of love of learning to be seen in the flyer too from Music, outdoor Maths and being creative with some fantastic woolly mammoths which may or may not need washing!

I also know from speaking to staff and children there have been lots of opportunities for children to reflect on those special moments both in their learning and school day.

Our Collective Worship theme this half term is 'generosity'. The children have been exploring what generosity means and the different ways that you can be generous, particularly ways that don't involve money. They have been challenged this week to take a line from our generosity poem to try and do. I am sure they would love to share their thinking about generosity with you.

In our second game in the Pele Trust Year 6 Football League against Darras Hall Team B, we won 3-0. A big shout out to Jackson for keeping his first clean sheet. Well done and good luck for your next match against Ponteland Primary Team A.

If you have not already done so could I remind Year 6 parents to apply for your child's place at High School. The online portal is currently open and closes on Thursday 31st October 2024. The High School is also having open mornings on the week beginning Monday 30th September and a prospective parents meeting after school on Thursday 3rd October 5.30pm-7.30pm.

I would like to encourage you again to support the school by choosing us as your school on the Asda app if you shop there. To date the school has raised £83.06 in two weeks from people just doing their shopping as normal!

Well done to Year 3 with the best attendance this week: 98.7%.

Well done to Year 2 for the best attendance for this year: 98.2%.

I hope that you enjoy reading this flyer and have a relaxing weekend.

Mr. A. Wheatley,
Headteacher



Attendance Matters



ATTEND *today...*
ACHIEVE *tomorrow...*
ATTENDANCE *matters.*

Northumberland
County Council

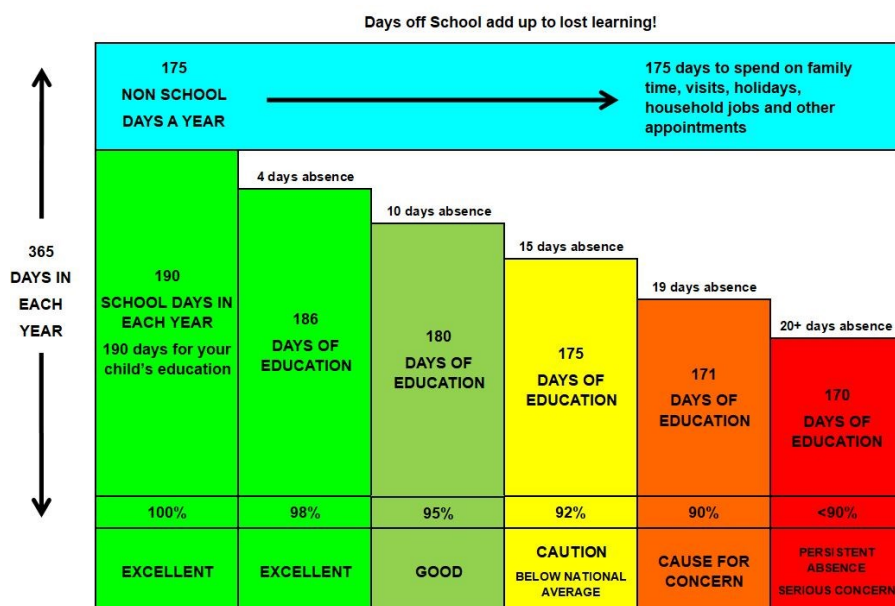


We continue to focus on attendance and punctuality so please remember that our School starts at 8.55am (9am for Nursery) and anyone arriving after this time will be marked as late.

Attendance for this week is summarised below:

Class	Attendance this week	Attendance this year	Class	Attendance this week	Attendance this year
Nursery (Hedgehogs)	95.6%	94.6%	Year 3 (Gibside)	98.7%	97.1%
Reception (Owls)	87.3%	92.8%	Year 4 (Lindisfarne)	93.8%	95.5%
Year 1 (Wallington)	96.7%	97.2%	Year 5 (Bamburgh)	94%	97.5%
Year 2 (Craggside)	95.4%	98.2%	Year 6 (Dunstanburgh)	95.9%	97.8%

Please see the graphic below which shows the significant impact of absence over time.



'Whatever you do work at it with all your heart'

Colossians 3:23



This week, the Hedgehogs have been focusing on different feelings. We have been reading the 'Colour Monster'. We have been exploring colour mixing and making faces using play dough. We have also been learning about the artist Alma Thomas, and we created our own collages based on her work.



PIC • COLLAGE

This week we have begun to think about how we are all different.
We used a mirror to look closely at our features and painted
theses amazing self portraits! Wow, well done everyone!



Next week we will continue to explore what makes us
special and unique.

PIC•COLLAGE

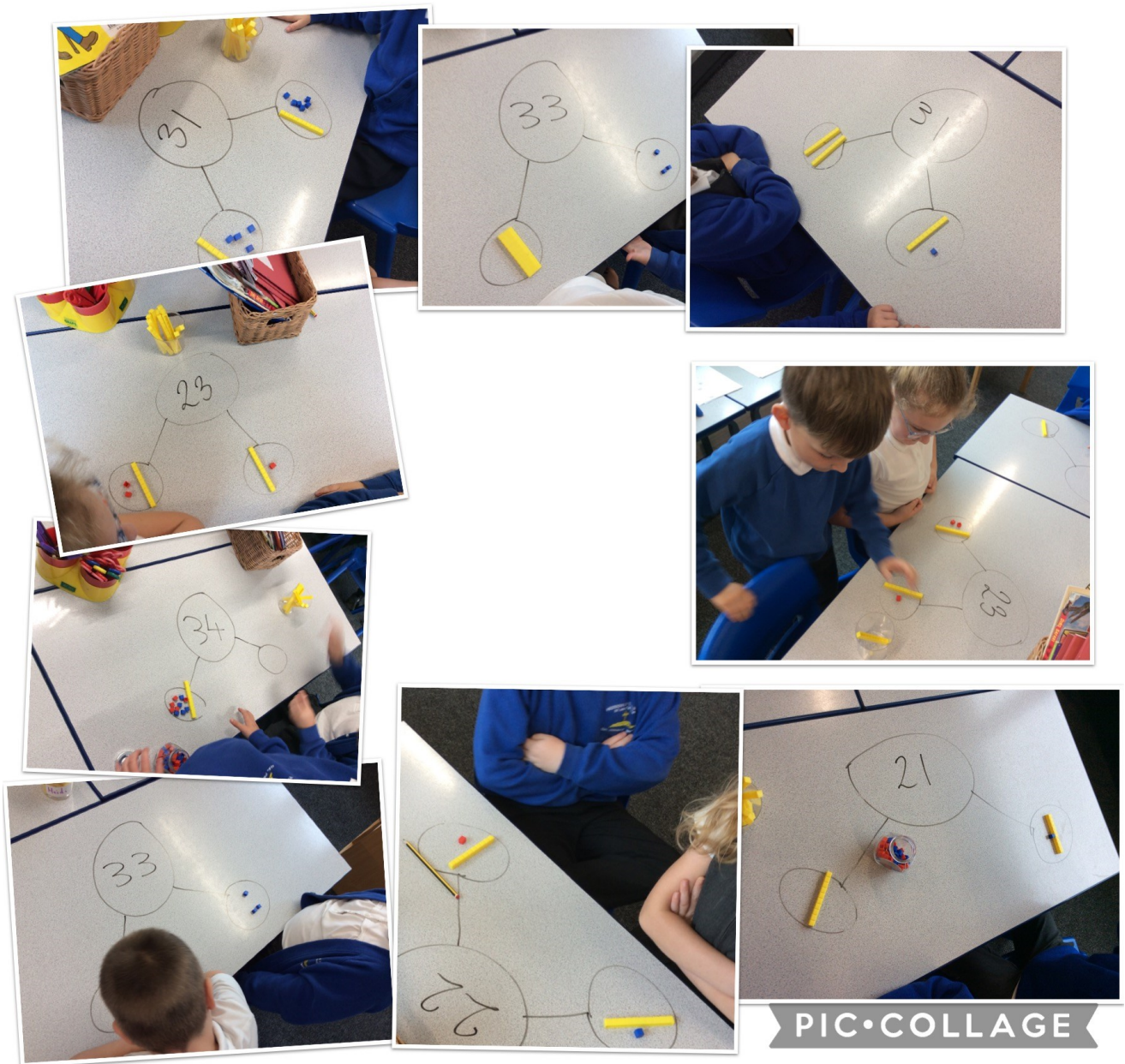
Taking Maths Outside with Year 1

This week in Year 1 we made the most of the wonderful sunshine by taking our Maths lessons outdoors. On Monday we hopped across number lines and said the numbers as we went across to help us count backwards. Then on Tuesday we went on a number hunt to find the number that was one less than the number on our worksheets. Another great week in Year 1!



Partitioning with Year 2

Year 2 have been practising flexible partitioning and are now absolute experts! Well done, Year 2!



Woolly Mammoths in Year 3!

As part of our English work this week, we have been reading and writing instructions, based on the text 'How to Wash a Woolly Mammoth.' In this lesson, Mrs. O'Reilly & Mrs. March wanted to see if we could independently follow a set of instructions about how to create a woolly mammoth craft - I think you'll agree the finished results are pretty fantastic!





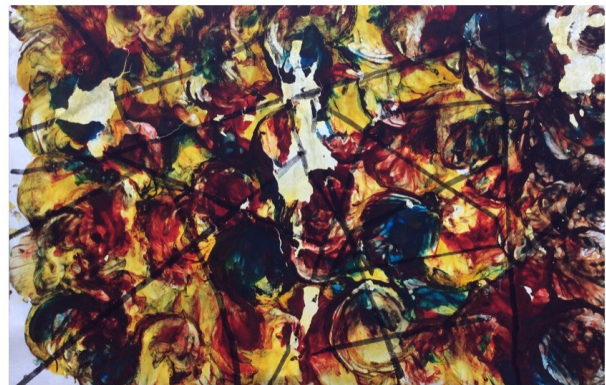
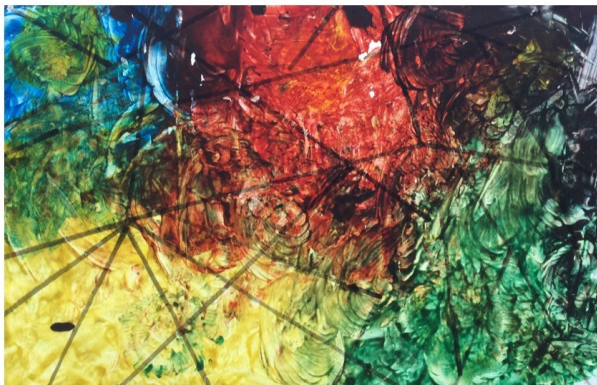
This week Mrs Milner has been helping us to develop our pentatonic scale using our hand staves and voices. We have some beautiful singers in Year 4!



PIC•COLLAGE

Stained Glass Windows with Year 5

This week Year 5 have really enjoyed making some abstract stained glass windows. They started by dropping blobs of paint across their grease-proof sheet. After that, they used milk bottle tops to press down into the paint. We were able to create a swirl pattern by twisting the bottle tops so that the colours would mix. Finally, when the paint had dried, we used black marker pens to imitate the lead lining of the stained glass windows. We have thoroughly enjoyed this.



Place Value with Year 6

We have had another hard working week in Year 6. To finish our first Maths unit (Place Value), the children completed an end of unit check. They were very accurate and worked out some rather difficult questions with confidence! It has also been lovely to see the sun shining this week, and it was great to make the most of the weather during our PE lesson with Mr Walker.





Ponteland High School

Y6 OPEN EVENING

The Crescent
Callerton Lane
Ponteland
Newcastle upon Tyne
NE20 9EG



Thursday 3rd October 2024 5.30-7.30pm

Listen to the Headteacher talk and take the opportunity to visit our fantastic curriculum areas

Aiming for our students to be happy, feel safe and secure, and achieve exceptionally well

Please see the below information from Mr. McElwee, Headteacher at Ponteland High School:

Year 6 Open Evening at Ponteland High School

I would also like to extend an invitation to our Year 6 Open Evening on **Thursday 3 October 2024 at 5.30pm**, when you and your child are most welcome to attend. This will be an opportunity for you to meet with some of the staff and hear a little more about the life of the school.

Experience has shown us that this event is very popular, so, to make sure families have as much time as possible to explore what we have to offer, the evening is organised as follows:

5.30pm Headteacher talk and presentation

6.15pm Headteacher talk and presentation (repeat of earlier talk)

5.30pm-7.30pm Opportunity to visit to curriculum areas, view work, talk with staff and meet students

Pele Trust Year 6 Football League Results - Game 2

Our game this week was away to Darras Hall Primary School (B Team).

A competitive game saw us winning 3-0. Special shout out to Jackson in goal who kept his first clean sheet of the season.

Our next fixture is against Ponteland Primary School A Team next week.

Well done everyone!



Many thanks to Heddon Juniors who sponsor our football strips.

Life



Clennell
Education Solutions

**I hate being late
for school**



I miss my friends...



**Everyone stares at
me...**



**I am always
behind...**



I feel alone....



**My friends know more
than me...**



**'You can get a lot of things
back, but you can't get back
the time you have missed...'**

**This can lead to missed
opportunities, missed
learning and feeling like you
have missed out..**



At The National College, our WakeUpWednesday guides empower and equip parents, carers and educators with the confidence and practical skills to be able to have informed and age-appropriate conversations with children about online safety, mental health and wellbeing, and climate change. Formerly delivered by National Online Safety, these guides now address wider topics and themes. For further guides, hints and tips, please visit nationalcollege.com.

What Parents & Educators Need to Know about

YOUTUBE

WHAT ARE THE RISKS?

INAPPROPRIATE CONTENT

YouTube is free and can be accessed via numerous devices, even without creating a YouTube account. Some content is flagged as 'age-restricted' (requiring the user to be logged into an account with a verified age of 18), but children can still view some mildly inappropriate content. This can include profanity and violence, which some young users may find upsetting.

CONNECT WITH STRANGERS

YouTube recommends videos related to what the user has previously watched on their account, aiming to provide content that will interest them. This is intended to be helpful but it can also lead to binge-watching and screen addiction – especially if 'auto-play' is active. Users without an account are shown popular videos from the last 24 hours, which might not always be suitable for children.

RADICALISATION

YouTube's algorithm tends to promote content that's getting the most traffic – a lot of which can be quite extreme. This can be fine for harmless topics, but YouTube isn't regulated like television, and that means that conspiracy theories, fake news and hateful ideologies can occasionally surface to warp impressionable minds all too easily. Remember – the more they watch, the more they'll be recommended.

CONNECTING WITH STRANGERS

YouTube is a social media platform which allows people to interact with other (usually unknown) users. Account holders can leave comments on any video they have access to, as well as message other users directly. Connecting with strangers online can potentially lead to children being exposed to adult language, cyberbullying and – in the worst cases – online predators. If a child is creating content themselves, this can increase the likelihood of them becoming a target.

TRENDS AND CHALLENGES

YouTube is teeming with trends and challenges, some of which are fun to watch and join in with. Children often find these immensely entertaining and might want to try them out. Most challenges tend to be safe, but many others may cause physical or emotional harm to children who watch or copy them. The painful 'salt and ice challenge' – where people use these two ingredients to burn their skin – is just one of many examples.

SNEAKY SCAMMERS

The comments sections of popular content creators regularly have scammers posing as that influencer, attempting to lure users into clicking on their phishing links. Scammers impersonate YouTubers by adopting their names and profile images, and often offer cash gifts or 'get rich quick' schemes. Children may not realise that these users aren't who they claim to be.

Advice for Parents & Educators

APPLY RESTRICTED MODE

For older children, Restricted Mode is an optional setting that prevents YouTube from showing inappropriate material (such as drug and alcohol abuse, graphic violence, and sexual content) to underage viewers. To prevent children from changing across age-inappropriate content on the platform, we would recommend enabling Restricted Mode on each device that they use to access YouTube. It's worth also turning the auto-play feature off, to prevent YouTube's algorithm automatically recommending something inappropriate.



TRY GOOGLE FAMILY

Creating a Google Family account allows parents and carers to monitor what their child is watching, uploading, and sharing with other users. It will also display their recently watched videos, searches, and recommended videos. In general, a Google Family account gives a parent or carer oversight of how their child uses sites like YouTube and helps to ensure that they are only accessing appropriate content.

MONITOR ENGAGEMENT

YouTube is the online viewing platform of choice for billions of people, many of them under 18. Younger children will watch different content to older ones, of course. You may want to keep an eye on how children interact with this material – and, if applicable, with content creators – to understand what they're interested in. Remember that creators often share content outside of YouTube, so don't ignore their web presence elsewhere!

CONSIDER YOUTUBE KIDS

It's possible to sidestep most inappropriate content completely via Google's own YouTube Kids app for Android handsets and iPhone. This lets you filter content by "preschool" (4 and under), "younger" (ages 5 to 8) and "older" (ages 9 to 12). This isn't a perfect substitute for personal supervision, as the app's filtering system is automated, and Google can't manually review all videos.

CHECK PRIVACY SETTINGS

YouTube gives users the option of uploading videos as 'private' or 'unlisted' – so they could be shared exclusively with family and friends, for example. Comments on videos can also be disabled and channels that a child is subscribed to can be hidden. If the child is only uploading videos set as 'private', they are far less likely to receive direct messages from strangers.

LIMIT SPENDING

Although YouTube is free, it does offer some in-app purchases. For example, users can rent and buy TV shows and movies to watch. If you'd like to avoid children purchasing content online, limit their access to online payment methods. Many parents have discovered the hard way that a child happily consuming a paid-for series quickly leads to an unexpected bill!

Meet Our Expert

Alan Martin is an experienced technology journalist who has written for the likes of Wired, TechRadar, Tom's Guide, The Evening Standard and The New Statesman.



The National College®

X @wake_up_weds

f /www.thenationalcollege

@wake.up.wednesday

@wake.up.weds

Users of this guide do so at their own discretion. No liability is entered into. Release date: 26.01.2023 Last reviewed: 31.05.2024

Dates for your Diary - Autumn Term



Friday 27th September 2024	Welcome Service at St. Andrew's Church - 9.30am Early Years and Key Stage 1
w/b Monday 30th September 2024	Open Mornings at Ponteland High School for current Year 6 children. 10:00am-11:30am daily
Tuesday 1st October 2024	Year 2 visit to Hall Hill Farm
Tuesday 8th October 2024	Exploring God and the Big Bang at Newcastle Cathedral for Year 6
Wednesday 9th October 2024	Year 6 visit to Beacon of Light
Wednesday 23rd October 2024	Safer Relationships workshops in school run by Northumberland Domestic Abuse Service
Thursday 24th October 2024	Non-Uniform Day
Friday 25th October 2024	Early Years and Key Stage 1 Harvest Festival at St. Andrew's Church - 9.30am
Friday 25th October 2024	Key Stage 2 Harvest Festival at St. Andrew's Church - 10.20am
w/c Monday 28th October 2024	HALF TERM
Monday 4th November 2024	TRAINING DAY - SCHOOL CLOSED
Tuesday 5th November 2024	Nasal Flu Vaccinations - Reception - Year 6

Dates for your Diary - Autumn Term



Tuesday 5th November 2024	Parents Evening
Thursday 7th November 2024	Parents Evening
Thursday 5th December 2024	Choir Christmas Concert in School Hall at 5pm
Friday 6th December 2024	School Christmas Fair
Friday 13th December 2024	TRAINING DAY - SCHOOL CLOSED
Tuesday 17th December 2024	Early Years Nativity in School Hall at 10am
Tuesday 17th December 2024	Key Stage 1 Christmas Performance at St. Andrew's Church at 1.30pm
Wednesday 18th December 2024	Key Stage 1 Christmas Performance at St. Andrew's Church at 10am
Friday 20th December 2024	Key Stage 2 Carol Service at St. Andrew's Church at 9.30am
w/c Monday 23rd December	CHRISTMAS HOLIDAYS