

HEDDON VILLAGE SHOW 2023

**KNOTT MEMORIAL HALL
SATURDAY 2ND SEPTEMBER**

2.00 - 4.30 PM

*Fun Dog
Show
11.30 am*



**Performances by
The Hat Band
1.30 & 3.00 pm**

ENTRY 50P



Committee & Volunteers

President	Bryn Tailford
Treasurer	Suzy Hall
Secretary	Linda Hawley
Steve Armstrong	John Jobling
Sarah Harris	Marjie Jobling
Ken Irwin	Penny Burt & Nora Street
Joan Barber	Sarah Harrison
Liam O'Donnell	Julie Ann Taylor

Email HeddonsShow@gmail.com Facebook Heddons Show

Show Rules

1. The show is open to all amateurs resident in the parish of Heddons and to members of the village organisations.
2. The children's classes are open.
3. Each entry will cost 30p. Children's classes are free.
4. No person can stage more than two entries in one class.
5. Any item which has won in a previous Heddons Show may not be entered.
6. The hall will be open at 9am on show day to stage entries.
7. All entries to be staged by 11am when the hall will be cleared for judging.
8. The show will open at 2pm.
9. Prizes will be awarded at the discretion of the judges.
10. Prizes will be awarded from 3.30pm against the ticket provided.
11. No entry may be removed before the prize giving.
12. All entries to be removed by 4.30pm.
13. The committee will not be responsible for any damage to or theft of competitors' property.
14. Prize monies: £3, £2 & £1

Programme

9.00 am Hall opens for staging of entries & registration
for dog show

11.00 am Staging of entries finishes / judging begins

11.30 am Dog show begins (Welfare Field)

1.30 pm Performance:

2.00 pm Show opens to the public by the show President

3.00 pm Performance:

3.50 pm Presentation of prizes

4.10 pm Raffle draw

4.30 pm Show closes

- ❖ During the show, teas and refreshments will be available in the Supper Room, courtesy of the Heddon W.I.
- ❖ Ladies, gents & disabled toilets are available in the Hall.
- ❖ We hope you enjoy the show, but if you have any queries or problems please speak to any member of the show committee.

Sincere thanks go to all of our sponsors, without whose
generosity the show would not be the success it is.

*Please park considerately in Towne Gate
and with regard to those with disabled parking requirements.*

Judges

Children's	Aileen Rand
Cookery & Preserves	Pam Alexander & Marjorie Goodchild
Floral Art	Pam Alexander
Flowers	David Hall
Handicrafts	Jackie Gaughan
Photography	David Illingworth
Vegetables	Nick Rudd
Wine & Beer	Bob & Ryan Tarn

Brian Selman Memorial Trophy

The Brian Selman Memorial Trophy will be presented again in 2023 to the person who submits the greatest number of entries in the show overall.



FLOWER CLASSES (Secretary John Jobling)

***It is advised that flowers stand better arranged in oasis
Dahlias to be judged according to National Dahlia Society Rules***

Flower cup to be presented for best exhibit in Classes 1-7

1. One vase three hybrid tea roses
2. One vase mixed perennials (three different species)
3. One rose, to be judged for scent
4. Three gladioli
5. Three asters
6. Three stems spray chrysanthemums
7. One house plant (foliage)
8. One house plant (flowering)
9. One bloom giant or large decorative or cactus dahlia
10. Three blooms medium decorative and/or cactus dahlias (not exceeding 220mm)
11. Three blooms small and/or miniature flowered, decorative dahlias (not exceeding 170mm)
12. Three blooms small and/or miniature flowered, cactus or semi-cactus dahlias (not exceeding 170mm)
13. Three blooms other dahlias, e.g. waterlily, collarette or single (not exceeding 170mm)
14. Three pompon dahlias (not exceeding 55mm)
15. Six stems sweet peas (**cup to be presented**)



VEGETABLE CLASSES (Secretary Ken Irwin)

Varieties to be labelled, if known

16. Six runner beans
17. Four broad beans
18. Six French beans
19. Three beetroot (round)
20. One cabbage
21. Two courgettes (100-150mm/4-6")
22. One cucumber
23. Two leeks (pot)
24. Three onion sets (dressed and tied)
25. Three onions from seed (as grown)
26. Four shallots (dressed)
27. Three potatoes (white)
28. Three potatoes (coloured)
29. One truss tomatoes
30. Three tomatoes on a plate
31. One truss cherry tomatoes
32. Collection of three varieties of vegetables
33. Three bulbs of garlic (**cup to be presented**)
34. A mis-shaped vegetable
35. One marrow
36. One pumpkin
37. One squash
38. Any other variety of vegetable or fruit



HANDICRAFTS CLASSES (Secretary Nora Street & Penny Burt)

Articles must have been completed within the last three years

39. A hand-knitted premature baby's helmet - no ribbons
(to be donated to the premature baby unit)
40. A cushion (any medium, to include cushion pad)
41. A hat with one or more pom-poms (any medium)
42. A tea cosy (any medium)
43. A hand-made purse (any medium)
44. A 'twiddle mitt' (*example pattern below* - to be donated
to a local Dementia care home)
45. A soft toy (any medium, eyes must be embroidered)
46. An item of jewellery (any medium)
47. A painting on a postcard (standard size, unframed)
48. A gift-wrapped item (quality & originality of wrapping to be judged)
49. A greetings card (no envelope)
50. A coaster (any medium)
51. Any handicraft by a young person under 14
(**special award to be given**)
52. Any article crafted in wood or metal
53. Any article of craft not classified



Twiddle Mitt Pattern

Twiddle mitts or hand warmers, with beads, buttons and objects sewn onto them are popular gifts for those living with Dementia, as having something to 'twiddle' helps to calm agitation and restlessness - both common symptoms of the condition.

Materials: Any left-over and odd balls of wool & 8mm circular or 6.5mm straight knitting needles.

Instructions

Cuff: Cast on 45 stitches using two strands of double knitting wool or one strand of chunky wool. Work in stocking stitch (1 row knit, 1 row purl) for 11 inches.

Mitt Body: Continue with stocking stitch or variety of fancy stitches, but use up oddments of various textures of wool such as chunky, mohair, ribbon etc. until the work measures 23 inches. Cast off.

Finishing: If working with straight needles, lightly iron the long strip, then neatly sew the long edges together with purl side facing you. Turn inside out, push the cuff (lining) up inside the mitt body and neatly sew the cast on and cast off edges together.

Decoration

Now is the time to decorate the mitt, inside and out, with ribbons, beads, flowers, zips, loops, pompoms, buttons, etc. You could even knit a separate pocket for a favourite photo or memento. Be creative, but make sure each item is securely attached.

COOKERY CLASSES (Secretaries Marjie Jobling & Joan Barber)

- | | |
|---|---|
| <p>54. One jar raspberry jam
 55. One jar strawberry jam
 56. One jar rhubarb & ginger jam
 57. One jar - any other variety of jam
 58. One jar - any variety of jelly
 59. One jar marmalade - orange or any other variety
 60. One jar lemon curd
 61. One jar chutney
 62. One jar piccalilli
 63. Four rock buns
 64. Four cherry scones
 65. Four cheese scones
 66. A lemon drizzle cake
 67. A Victoria sandwich cake (in one tin, two egg mix, jam filled, dusted with caster sugar)
 68. Four chocolate chip cookies
 69. Gingerbread
 70. One cornbeef pie
 71. Sun-dried tomato bread (one loaf)
 72. A fruit pie (pastry top & bottom)
 73. MEN ONLY Four ginger biscuits
 74. MEN ONLY A cottage loaf
 75. Salted caramel cake to given recipe (below)</p> | <p><i>Notes:</i></p> <p>* <i>Lemon curd: approx 250g jars, covered with waxed disc and cellophane cover.</i></p> <p>* <i>Chutneys & pickles: jars with new vinegar-proof lid, no waxed disc. If chutneys are very spicy please put note on label.</i></p> <p>* <i>Jams: approx 250g jars covered with new screw top lid, no need for waxed disc.</i></p> <p>* <i>Jellies: small jars with new screw top lid.</i></p> <p>* <i>Jars should be filled to within 1/4" of the rim.</i></p> |
|---|---|

Ingredients	Method
3 tbsp <u>tonic</u> water 225g Butter 175g caster sugar 55g light muscovado sugar 4 eggs 1 tsp vanilla extract 225g sr flour 1 tsp baking powder 1 tbsp milk 1x397g tin caramel 1/2 tsp fine sea salt Icing 250g unsalted butter 250g icing sugar 1/2 tsp fine sea salt 115g salted caramel fudge chopped	<ul style="list-style-type: none"> ♦ Grease and line a 2lb loaf tin. Grease & line 2 20cm/8in sandwich tins. ♦ Put butter, sugar, eggs, vanilla, flour, baking powder, milk, 3 tbsp of the caramel & salt into a large bowl. Beat for 2 minutes. ♦ Spoon the mixture into the prepared tin and cook for 25-30 minutes. Allow to cool. ♦ Make the icing by whisking the butter & icing sugar together until pale & creamy. Add the salt & remaining caramel, whisk until just mixed. ♦ Spread a 3rd of the icing on top of one cake, place the 2nd cake on top. Spread the remaining icing over the top & sides. Sprinkle with the chopped fudge.

PHOTOGRAPHY CLASSES (Secretaries Sarah Harrison & Liam O'Donnell)

Photographs to be mounted on card
Max 175mm x 125mm/7" x 5"

- 76. A picture capturing a royal event or your celebrations of it
- 77. Three of a kind (three prints mounted on one card)
- 78. Landscape or Seascape
- 79. Reflections (water, mirrors, glass, etc.)
- 80. Wildlife in your garden

FLORAL ART CLASSES (Secretary Suzy Hall)

Fresh flowers unless specified

- 81. An arrangement a tea cup
- 82. A seasonal wreath (foliage & flowers) not exceeding 15" diameter
- 83. An arrangement in an unusual container
(Novice Class - entrants who have not entered more than twice)

WINE & BEER CLASSES (Secretary Stephen Armstrong)

All wine to be presented in standard, clear wine bottles with plain label

- 84. One bottle red wine from natural ingredients
- 85. One bottle white wine from natural ingredients
- 86. One bottle wine from a kit
- 87. One bottle liqueur
- 88. One bottle home-brewed beer/lager
- 89. One bottle non-alcoholic drink from natural ingredients



CHILDREN'S CLASSES

(Secretary Suzy)



Age must be put on entries

Pre School & Early Years

- 90. A model created using junk
- 91. A decorated crown for a king or queen

Key Stage 1 (5-7 years)

- 92. A garden on a plate
- 93. A piece of art inspired by Northumberland—this could be a painting,, a drawing, model, photo or even a poem

Key Stage 2 (7-11 years)

- 94. A piece of art inspired by David Williams
- 95. A four-line poem in your best handwriting

Key Stage 3 (11-14 years)

- 96. A piece of art inspired by your favourite book
- 97. A piece of art inspired by imagination—this could be a painting,, a drawing, model, photo or even a poem

General Classes (all ages)

- 98. Something I baked
- 99. Something I grew
- 100. A humorous photograph



HEDDON SERVICE STATION

SPAR STORE · POST OFFICE



Post Office Services ~ National Lottery
Off Licence ~ Cash Machines ~ Groceries
Electronic Top-Ups ~ News & Magazines

6am - 9pm Mon-Sat
7am - 9pm Sun

Tel 01661 852276

Richardson.heddon@spurshop.com



Heddon Holistic Therapy Centre

Caring for Body, Mind and Soul

5 Taberna Close . Heddon on the Wall . NE15
0BW . Tel 01661 853699

Valerie and Katie offer

Deep Tissue Massage : Reflexology

Sports Injury Massage :

Hot Stone Massage

: Aromatherapy : Acupuncture

Supports and wishes Heddon Village Show



School of Motoring

1ST LESSON - 2HRS FOR THE PRICE OF 1
DRIVING COURSES TAILORED TO YOUR NEEDS
FROM NOVICE TO REFRESHER
PASSPLUS AND MOTORWAY LESSONS
DISCOUNTS FOR BLOCK BOOKING

Your local instructor:

Sarah Harris

6 Campus Martius - Heddon

Mobile: 07889 407571

Houghton North Farm

**Visitor Accommodation
& Holiday Cottage**

Do you have family and friends visiting and not enough room for them?

Why pay hotel prices when you can stay at Houghton North Farm?

We have 6 bedrooms and a holiday cottage



For enquiries, ring Paula on
0770 841 9911 or 01661 854364

Look us up on the net: www.hadrianswallaccommodation.com

**Your local nursery growing for gardeners in the
North East and Nationwide for over 100 years!**



HELPING YOUR GARDEN GROW

**West Heddon Nursery
Heddon on the Wall**

01661 852445

Open Mon-Sat 9am-5pm

Sun 10am-5pm



Pash Paw's
Dog Grooming



4 Taberna Close, Heddon on the Wall
01661 853000 : 07920 148380

*Full grooms : Puppy packages : Bath & brush out : Nail clipping :
Toys & treats : Collars & leads : Clothing & accessories*

City & Guilds trained staff, experienced animal care,
canine first aid, fully insured

Wylam Painting & Decorating

**INTERIOR & EXTERIOR
DOMESTIC & COMMERCIAL
FREE ESTIMATES
FULLY INSURED**

TELEPHONE 01661 853905 / 07981 895835

WYLAMPAINTECS@AOL.COM



*A warm welcome awaits at
the Soul of Heddon!*

REGULAR EVENTS

**TRADITIONAL ROAST
SERVED EVERY
SUNDAY 12-4PM**

(delivery & collection slots available)

**QUIZ NIGHT EVERY
TUESDAY 9PM**

**BEER DRAW
EVERY FRIDAY**

sky sports

BT SPORT

amazon
SPORTS

(Available)

*Phil & Sophie, Three Tuns, 1 Military Road Heddon on the Wall, Newcastle Upon Tyne NE15 0BQ
T: 01661852172 M: 07894562964 E: threetuns.heddon@gmail.com*

**HARRISON
ARCHITECTS
STUDIO**



- ❖ Bespoke residential extensions
- ❖ Listed buildings advice
- ❖ Interior design services
- ❖ Initial visit for free

Sarah Harrison RIBA

HARRISON ARCHITECTS STUDIO LTD

07917 633 737 | www.harrison-architects.com



NEW

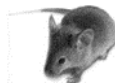
*** 'Bark Park', where dogs can run off
the lead (bookable in half hour slots)**

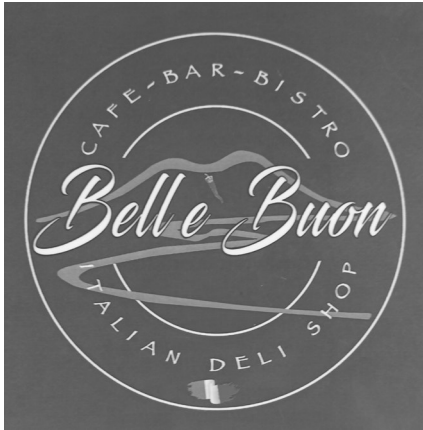
*** 'The Retreat' - 5* luxury accommodation for dogs**

.Also: 'The Cat's Whiskas' cattery & small animal accommodation

**ALLERBURN . EAST HEDDON
HEDDON ON THE WALL . NE15 0HB
Tel 01661 825208
www.hfhpetboarding.co.uk**

*Proprietors Robert & Eileen Young
have been catering for pets who
like pampering for over 25 years
and they'll welcome you whether
you're a tiny mouse or a Great Dane*





**Café, Bar & Bisto
Italian Deli Shop
Breakfast, Lunch & Dinner**

Open Tuesday –Thursday 9am -7pm

Friday & Saturday 9pm - 9pm

Eat in or Take away

Dog Friendly

**3 Taberna Close
Heddon on the Wall NE15 0BW
01661 854325**

THE SWAN
Heddon on the Wall
Seasonal food in unspoilt
surroundings
pub food, cask ales, fine wines
Fixed price lunch Mon-Thurs
Weekly Quiz Monday 8pm
Private Dining area available to
book 01661 853161

f **VINTAGE** **— i n n s —** **🐦**



You are invited to visit our stand
at the Heddon Dog Show
where you can meet some of the staff
and ask about our

Health Care Plan for Pets

Cut out the voucher below and
make an appointment at the surgery
for a **FREE** nail clip*



**FREE Cat/Dog/Small Pet
Nail Clip
with this Voucher**

***Excluding any additional treatment**

**2 Taberna Close, Heddon on the Wall
01661 854699
www.blythmanandpartners.co.uk**

Events & Activities

(in & around the Knott Memorial Hall)

Fun Dog Show
@ 11.30am (Welfare Field)

Face Painting @ Knott Hall 11.30am

Performances by The Hat Band
@ 1.30pm & 3.00pm

Hall open to the public @ 2.00pm
for display of class produce & exhibits



Teas & refreshments in the Supper Room
(Heddon W.I.)
Raffle



*Fresh Organic Raw and Pasteurised Milk, Dairy
& Meat Produce available from our organic farm*

Self Serve Vending Room with Milkshakes, Milk, Coffee
Machine and more. OPEN EVERYDAY 10AM-7PM

Heddon on the Wall, Newcastle upon Tyne, NE15 0JW
www.baysleaporganic.co.uk

Kevin Taylor - Plumbing - Heating - Gas

- Boiler installation, Repair & Servicing
- Bathrooms & Wet Rooms
- Leaks & Bursts / Toilets & Taps
- Landlord Safety Certificates

Kevin Taylor Mobile 0794 6709714
ktaylor.plumbing@sky.com

Email
Gas Safe Reg. No 197253

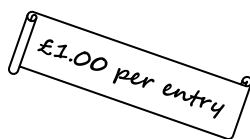


Fun Dog Show








Welfare Field

11.30 am - 1.00 pm

(SECRETARY SARAH HARRIS)



Schedule of Events

09.00-11.00	Registration for classes (Knott Memorial Hall)
11.30	Show starts (Welfare Field)
	 Prettiest bitch
	 Most handsome dog
	 Waggiest tail
	 Fancy dress
	 Golden oldie (any dog 8 years+)
	 New kid on the block (any dog under 18 months)
	 Dog judge would most like to take home
	(cup to be presented)
13.00	Show ends
14.00	Presentation of cup (Knott Memorial Hall)

Rules

1. The show is open to all residents of the parish of Heddon on the Wall and to customers of Blythman & Partners and Home from Home Boarding Kennels.
2. All dogs must be registered prior to the show (dogs not required at registration).
3. There is no limit to the number of classes that can be entered.
4. One dog per handler.
5. At registration, owners will be issued with a Tag Number for each dog entered. This must be presented at the start of each class entered.
6. Each entry will cost £1.00. Entry fee non-refundable.
7. 1st, 2nd & 3rd places will be awarded at the discretion of the judge.
8. Owners are responsible for their dogs, which must remain under their control at all times. Anti-social behaviour will not be accepted and owners may be asked to remove their dogs. The committee will not be responsible for any injuries caused by dogs.
9. All handlers must have their own disposal bags and are responsible for cleaning up after their dogs. A designated bin will be available for disposal.
10. Only the cup-winning dog will be permitted at the Knott Memorial Hall for the cup presentation.
11. Free entry for all spectators.



This year the Heddon Village Show will be held along-side the Hadrian's Wall Culture Festival, we look forward to a weekend full of activities to be enjoyed by everyone in the village and beyond. The weekend will commence with the unveiling and inauguration of Hadrian's head mosaic followed by music at the Swan and Three Tuns on Friday night.

We can look forward to ukulele, kite making & hand bell ringing workshops, a makers market, poetry & interactive reading with a children's author, crafts & food to mention just a few of the things planned for the weekend.

The village will also be alive with music, Prelude will be raising the roof of the Knott Hall on Saturday night. The AD Murum singers will be performing a concert & there will be hymns & Pimms in the church on Sunday.

The weekend will end with a hogg roast, ice cream and kite flying on Sunday.



The Heddon Show committee would like to give a big thank you to some of our committee members who have stepped down from their roles since our last show in 2019. Brin Tailford (Chairman), Ann Hotchkiss, Hedley Rogers (Treasurer), & Mick Tierney.

Brin & Ann have been members of the committee since the early days of the show & have had a big hand in the show's success over the years.

Although Brin is stepping down as Chairman he has agreed to become the show President, this is a role previously held by Joyce Laws who we sadly lost in 2022, along-side Betty Thompson both previous long time committee members.

Finally can we also remember Barbara Coulson our long time secretary who we also sadly lost last year.