



I can write a
recount in the
form of a postcard

Friday 21st January 2021

Today you are going to write a postcard in character as Johnny to either Freddie or Mary. He has arrived at the Southampton docks and witnessed the Titanic for the first time (the scene you described in detail yesterday).

Look through the slides to see some examples of real postcards sent from Southampton the day before Titanic departed on her maiden voyage.

A postcard is a type of recount, so it is written in the first person; just like the diary entry you wrote on Tuesday. Look at the features of recount writing on the PowerPoint slides. Can you use an informal style to sound more like Johnny?

You can print off the Postcard template on the final slide to write on- or draw your own!

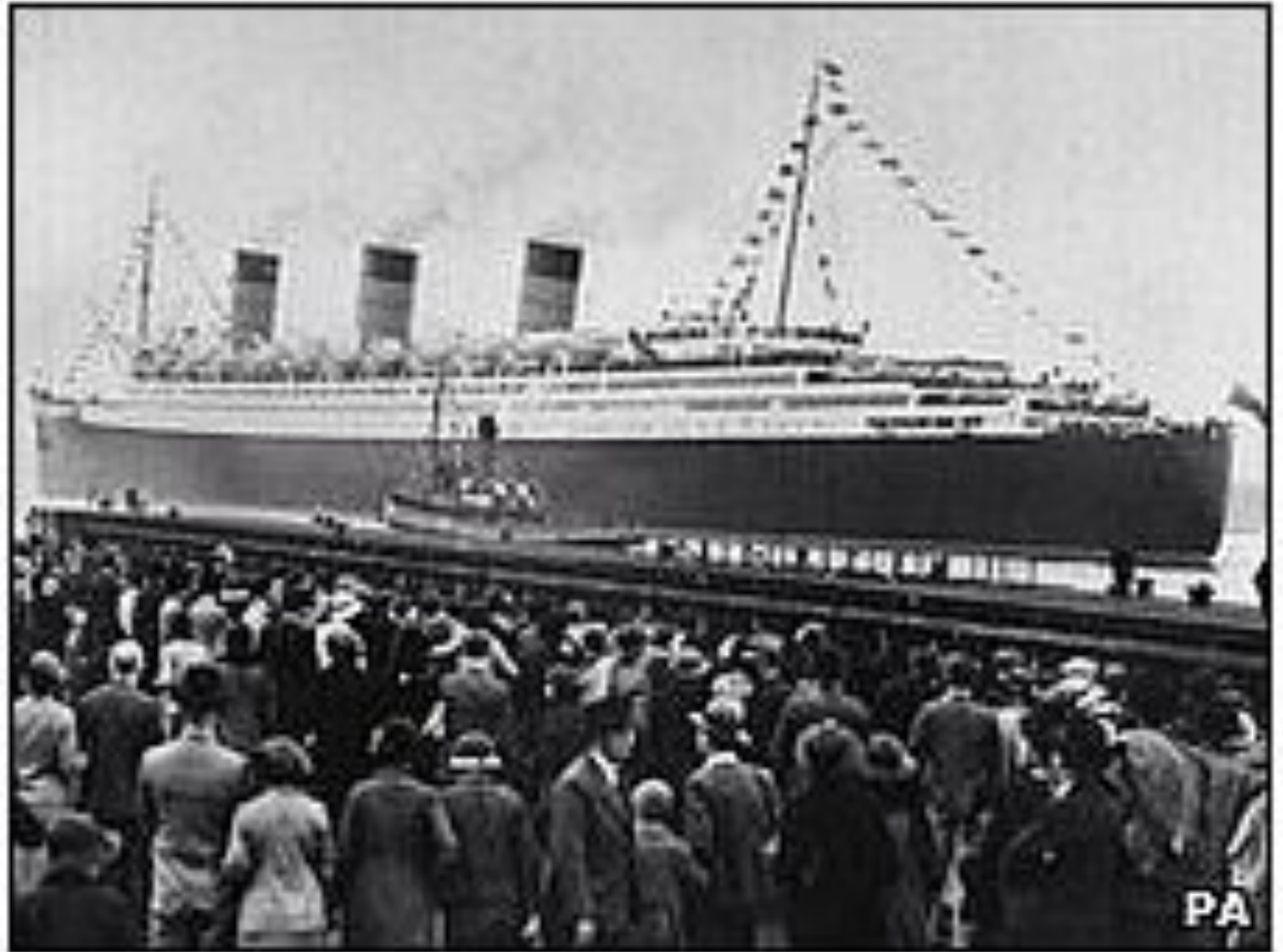
Extension- postcards have an image on the front; usually of the place from which they are sent from. Have you ever sent a postcard from holiday? Can you design an image for the Titanic docked at Southampton?

I can't wait to read your amazing work! 😊

**What can you
remember
about the
atmosphere at
the dock?**

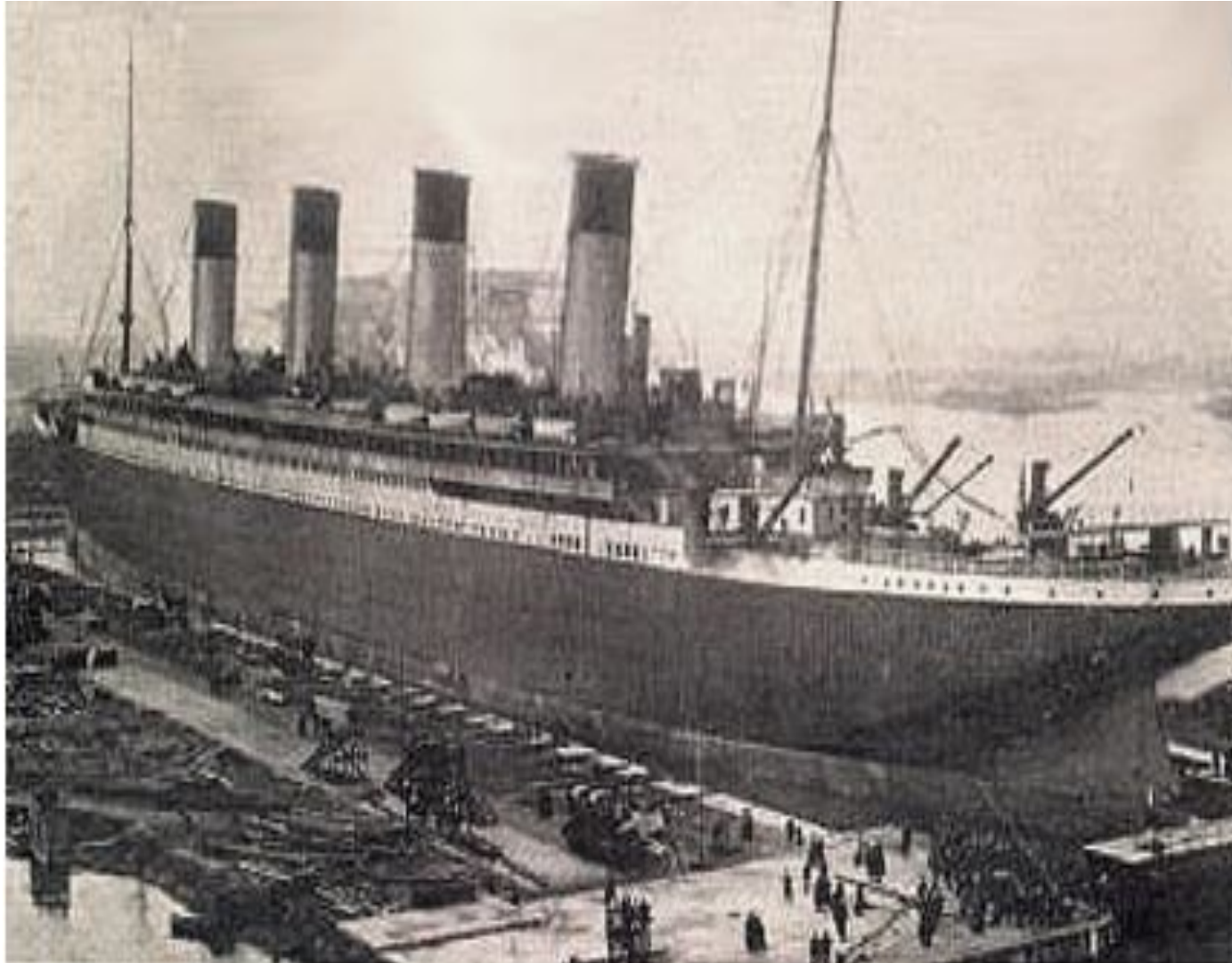


Facilities on board Titanic





Titanic arrives in Southampton...



Titanic arrived in Southampton Port on the 3rd April 1912.

Many people came from all around to see the great ship.

Layout of a postcard

POSTCARD

Informal style

Dear Mary,

You'll never guess what - I have been down to Southampton dock today to see...

This morning I arrived here by train with the Stanton family. We travelled first class and ...

The boat departs in an hour. I shall have to say my goodbyes to ...

From Johnny x

A stamp in the top right corner.



Lines for writing the address.

Mary O'Connell

The Servants' Quarters

The Savoy Hotel

London

K45P3R

Space to write about your trip – what you have done and what you will be doing.

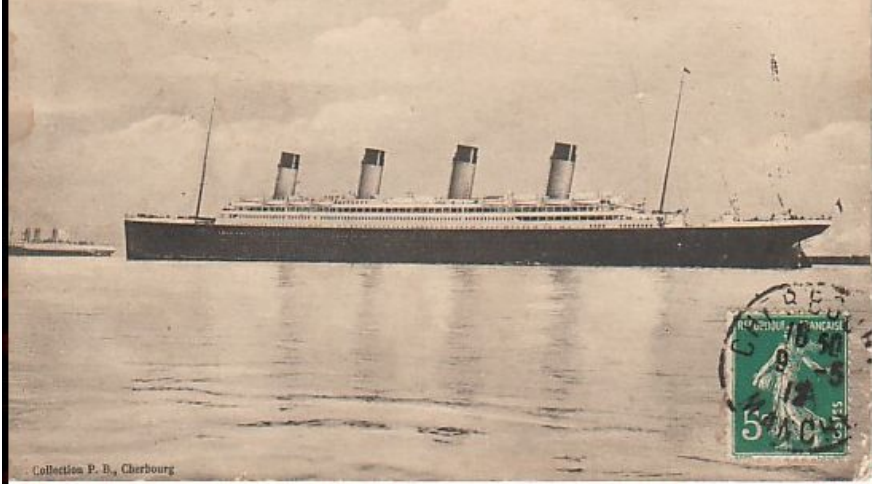
The name and address for who you are sending the postcard to.

Le "TITANIC" jaugeant 45.000 tonnes, longueur 268 m. 977, largeur 28 m. 193, profondeur 29 m. 66, a coute 48 millions. Coule a 3.200 metres de fond dans la traversée de Southampton a New York a la suite d'un abordage avec un bloc de glace. 1.500 victimes - 16 Avril 1912



(S.D.)

Le paquebot géant "Titanic" de la White Star Line, en rade de Cherbourg, le plus grand du monde qui vient de couler près de Terre-Neuve faisant de nombreuses victimes



Collection P. D., Cherbourg



Hotel Metropol Brussel
15 mai Correspondance: 1912

Tous les pays étrangers n'acceptent pas la correspondance au recto, se renseigner à la Poste

Carre Postale
BRUSSELS
16-17
15-V
1912

ZEIST
10.5.12

10

Mademoiselles
Luijckxper
De Brink
Zeist
pres-Utrecht
Pays-Bas.

Lieve vrienden. Wij zijn gisteren in goede vloten hier aangekomen en hebben het heel prettig met ons viereen ook hebben wij prachtig weer. Ik vind het u heel fijn mogelijk bij kant bij het koop met de reis. De vloten theater zijn gesloten. Ik hoop dat gij het allen wel maakt. Ik hoop later nog avond thuis te komen. Veel liefs aan allen. t. a. v. Joha Etice.

Carre Postale
CHERBOURG
15
12

CARTE POSTALE

CORRESPONDANCE

Cherbourg. 9 mai 12

Bons baisers
J. Hamet

ADRESSE

Monsieur
Albert Hamet
Chez Monsieur Morand
à Pornichet

Louise Infirmerie.

A good example
...

Post Card

This side may be used for correspondence.

12th April 1912.

Dear Freddie and Mary,
Titanic is the most beautiful ship, it is.
There are so many people here - all
crowding the dock. Gave Kaspar to
Luzibeth. I don't know why though.
I'm thinking about being a ~~stowaway~~
~~stow~~ well, you know, sneaking on the
ship and going to America - actually...
yeah - I'm going to do it - live in the land
of dreams. I will miss you two so much.
Johnny. ~~Johnny~~

This side for address only.

The Savoy Hotel

Strand

London

WC2R0EZ

*vv Excellent use of informal language
and style.*

*I crossed out 'stowaway'
and spelt it wrong
because Johnny can
not spell this word!*

