

Embryo Photos

Day 1



16 hours First sign of resemblance to a chick embryo

18 hours Appearance of alimentary tract

20 hours Appearance of vertebral column

21 hours Beginning of nervous system

22 hours Beginning of head

24 hours Beginning of eye

Day 2



25 hours Beginning of heart

35 hours Beginning of ear

42 hours Heart beats

Day 3

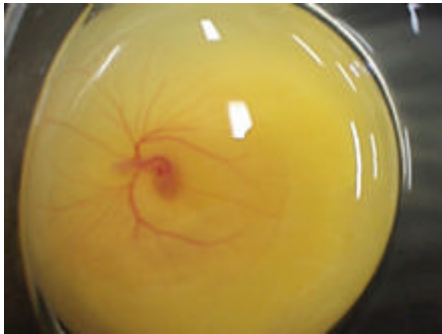


60 hours Beginning of nose

62 hours Beginning of legs

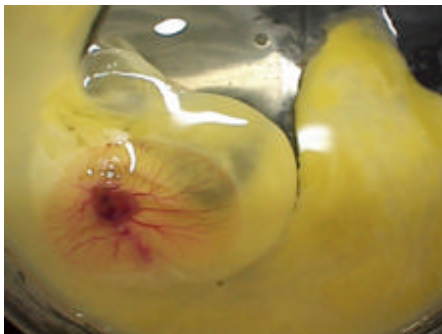
64 hours Beginning of wings

Day 4



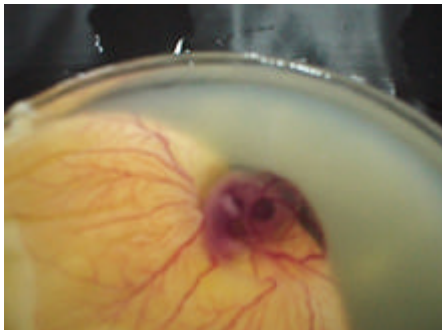
Beginning of tongue
Eye pigmentation noticeable

Day 5



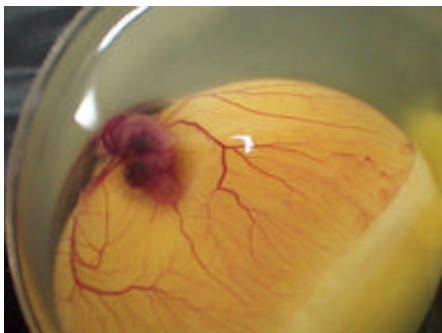
Formation of Reproductive organs and differentiation of sex
Development of leg joints

Day 6



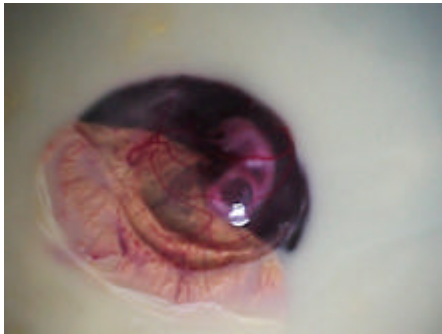
Beginning of beak
Voluntary movements commence

Day 7



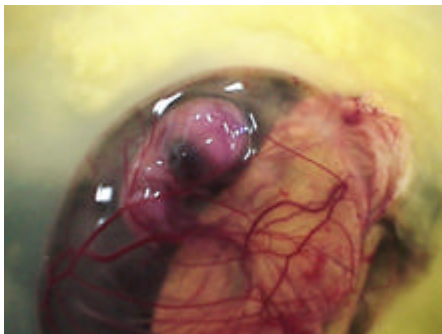
Comb begins to develop
Egg Tooth noticeable

Day 8

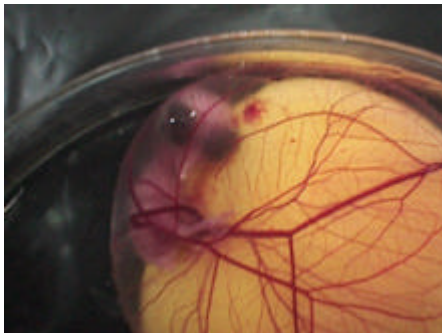


Beginning of feathers

Day 9



Day 10



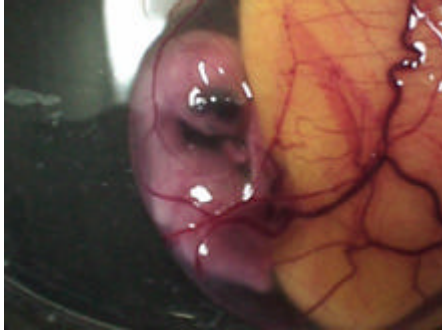
**Beak starts to firm
Egg Tooth prominent**

Day 11



Tail Feathers appear

Day 12



Toes forming

Day 13



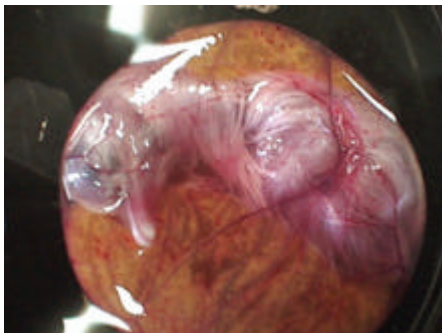
**Appearance of scales & claws
Feathers cover all of body**

Day 14



**Embryo moves into a position
suitable for breaking shell (head
towards the blunt end of egg)**

Day 15



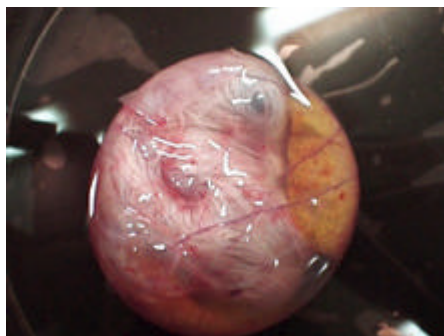
Day 16



Scales, claws & beak become firm and horny

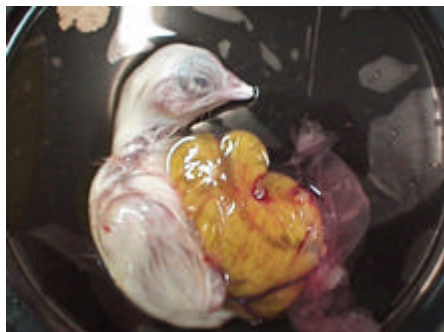
Albumen (white) is nearly all absorbed

Day 17



Beak turns towards air cell (blunt end of egg)

Day 18



Day 19



Yolk sac begins to enter body cavity

Day 20

Yolk sac completely drawn into body cavity. Embryo occupies almost all of the space in the egg except the air cell

Embryo is now a chick and commences breathing in the shell

Day 21



Chick hatches