

Ponteland High School

Admissions information for 2019-20

If you would like to attend an Open Morning please confirm via email to Carol Wilson, Head's PA (phs@ponthigh.org.uk)

Website:
ponthigh.org.uk

**Follow us on
Twitter:**
@PontHigh



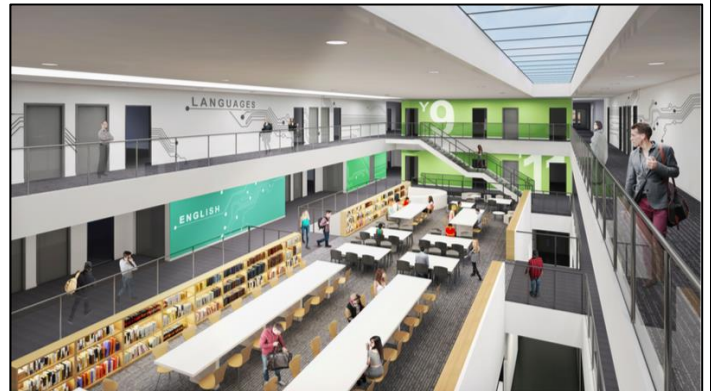
Background

In September 2019 Ponteland High School will become an 11-18 secondary school. For the first time we will enrol students in year 7 and year 8 so that they spend their formative secondary years with us before embarking on their GCSE studies. We firmly believe this continuity will benefit our students as they progress through the school.



New school build

In September 2020 we move into a brand-new school building that features a primary school, secondary school and leisure centre. This will provide the high-quality learning environment that our students and staff deserve. Work on the proposed site is scheduled to begin before the end of the year and the school will be complete for September 2020.



Parents of Year 6 children

We are holding a series of Open Mornings in school for parents to see the school in action. You are welcome to bring your child with you.

**Monday 1 – Thursday 4 October (incl)
10.00-11.30am**

Year 6 Open Evening

Thursday 4 October (6.00-8.00pm)

There will be a talk by the Headteacher at 6.00pm, repeated at 7.00pm. The rest of the evening provides an opportunity to visit curriculum areas and talk to staff and students.



Parents of Year 7 & 8 children

We are holding a series of Open Mornings in school for parents to see the school in action. You are welcome to bring your child with you.

**Monday 8 – Thursday 11 October (incl)
10.00-11.30am**

Year 7 Open Evening

Wednesday 10 October (6.00-8.00pm)

Year 8 Open Evening

Thursday 11 October (6.00-8.00pm)

On each evening there will be a talk by the Headteacher at 6.00pm, repeated at 7.00pm. The rest of the evening provides an opportunity to visit curriculum areas and talk to staff and students.

Admissions process

We will be accepting applications from all local schools (primary and middle). Please note that this process is managed by Northumberland County Council and not the school.

Applications are made via Northumberland County Council

<http://www.northumberland.gov.uk/Education/Schools/Admissions.aspx> for Northumberland residents.

Applications are made via Newcastle Council - <https://www.newcastle.gov.uk/education-and-learning/admissions-and-school-transfers> for Newcastle residents.

The deadline for applications is 31 October 2018.