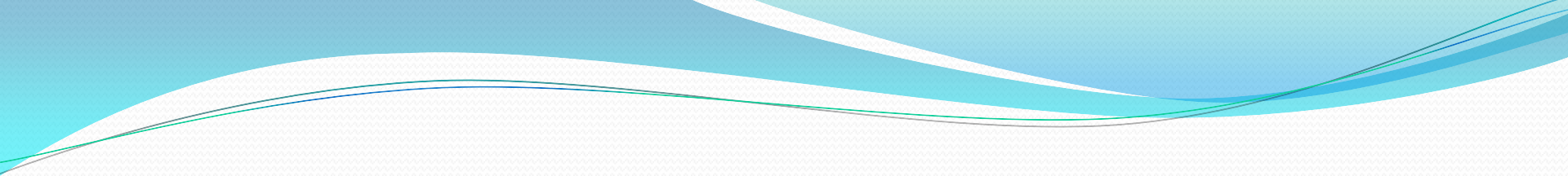
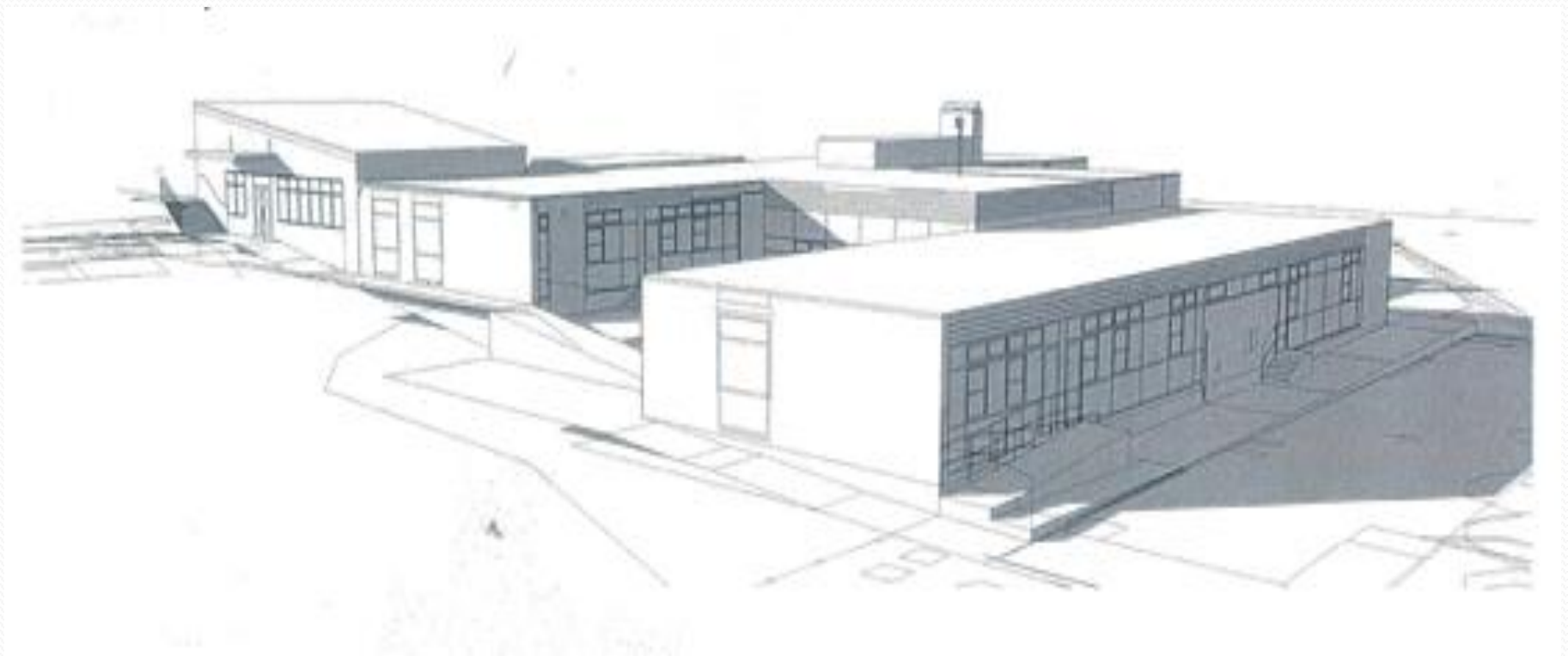




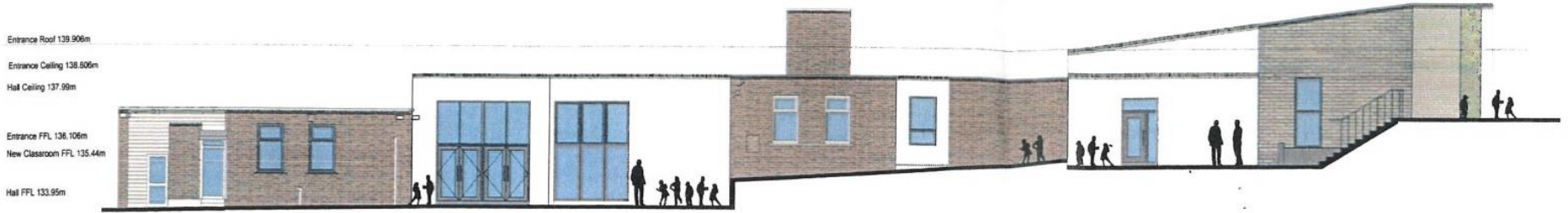
Parent Briefing Session
Thursday 20th October 2016











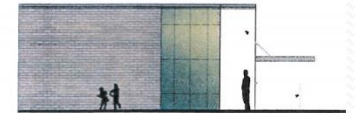
North Elevation



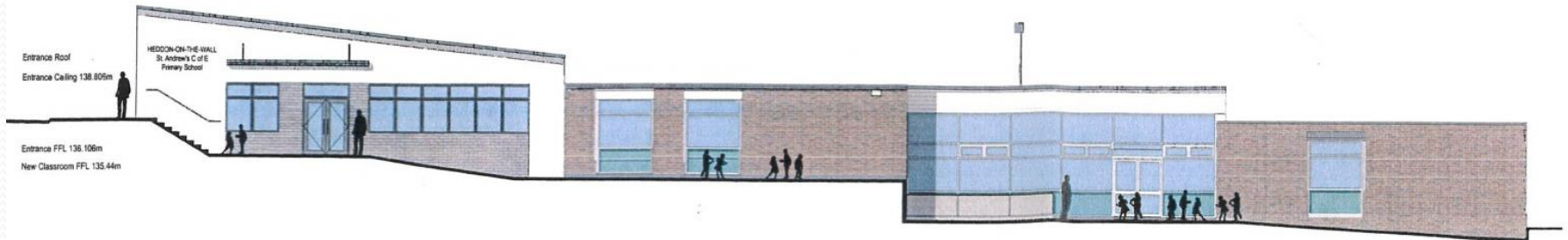
West Elevation



West Elevation Entrance Option 1



West Elevation Entrance Option 2



South Elevation



+12.705
Hard Surface Play
2200'

+12.87

New studio &
storage

New 10k

New classroom

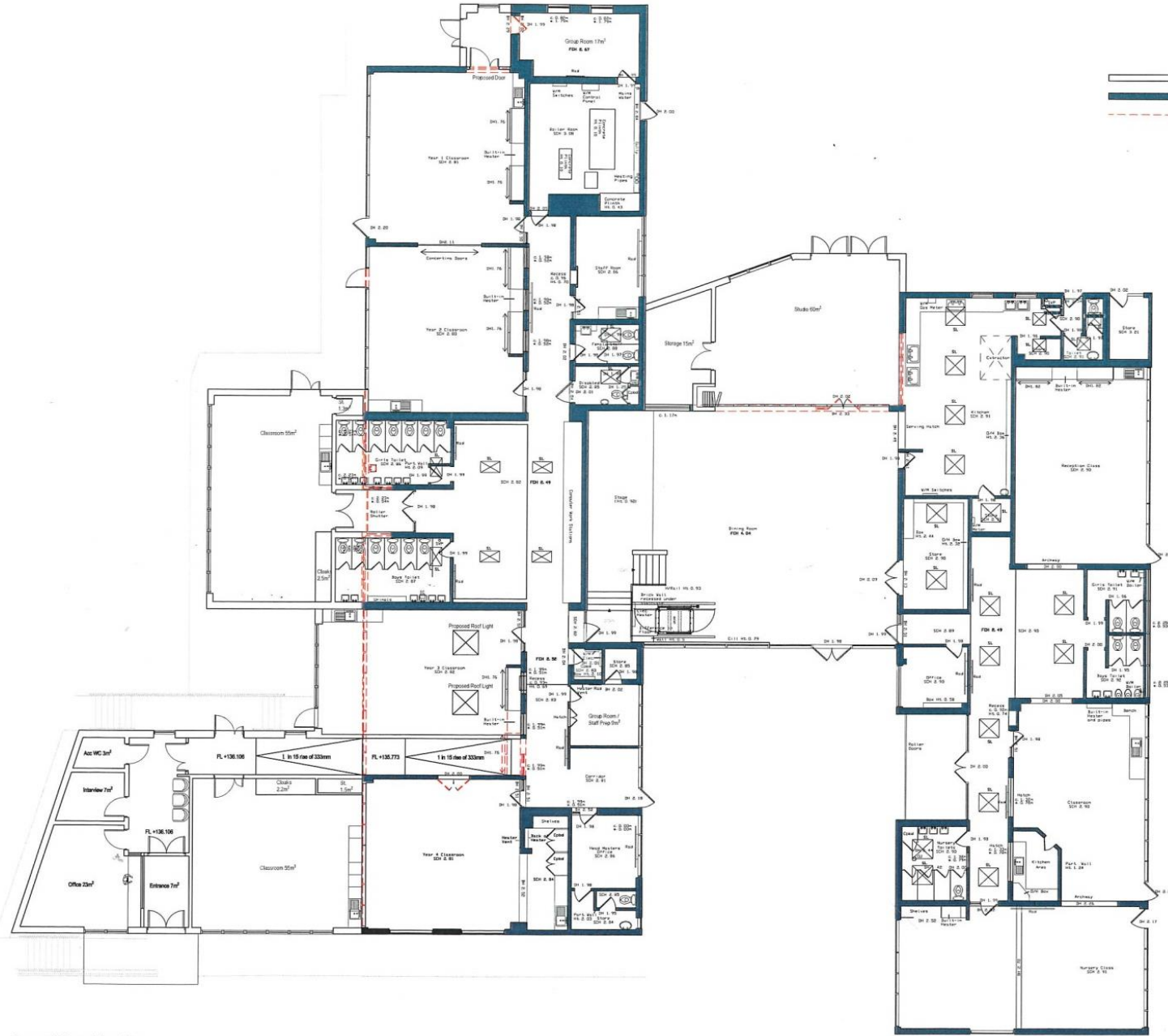
New classroom
extension

New entrance,
admin suite & classroom

This drawing is copyright
 © 2018 by H.L. Litchfield and must not be reproduced or broadcasted in any form without our prior
 permission.
 Drawings are for the design.
 This drawing is to be used in conjunction with all relevant contracts, specialist manufacturers drawings
 and specifications.
 Any discrepancies in dimensions or details or in between these drawings should be drawn to our attention
 and dimensions are to be taken unless stated otherwise.
 Any survey information incorporated onto this drawing cannot be guaranteed as accurate unless
 confirmed by field dimensions.

REV	DESCRIPTION	BY	CHKD	DATE
001	Initial Issue	PM	ES	26/07/2018
002	Proposed changes and classroom design to keep existing	PM	ES	26/08/2018
003	Ready to work paper	PM	ES	26/08/2018
004	Manufactured to be checked elevations	PM	ES	26/08/2018
005	Issue for tender	PM	ES	12/09/2018

- Proposed Walls
- Existing Walls
- Walls to be demolished



Proposed Ground Floor Plan

Scale Bar 1:100



PURPOSE: PRELIMINARY			
PROJECT: Heddon-on-the-Wall First School Northumberland County Council			
DESCRIPTION: Proposed Floor Plans			
DRAWN BY:	SCALE:	SHEET SIZE:	DATE:
PM	1:100	A1	14/07/2018
REV:	DRG:	LEV:	TYE:
16088	HL	GF	DR
		NO:	NO:
		2000	
		S3	P04

HL H LITCHFIELD
 4 Old Bank, Durham, DH1 3AL, T: 0191-2811111, F: 0191-2811112, E: hll@hll.com
 15-17 Broad Street, London, EC2M 2YS, T: 02071 211800, E: hll@hll.com
 www.heddononthewall.com

Building Proposal

- Site surveys;
- Ecological surveys including bats;
- Tree surveys;
- Drainage;
- Utilities (electricity, water, communications);
- Meetings with architects;
- Health and Safety Site Visit;
- Planning;

Initial Plans

- Two purpose built classrooms;
- Additional toilets;
- Additional hardstanding playground.

Revised plans and proposals

- New Studio Hall and storeroom adjoining Main Hall;
- Two additional classrooms;
- Additional toilets and teaching spaces created including development of Caretaker's room;
- New entrance suite consisting of Main Office, secure lobby and waiting areas, interview room and accessible toilet;
- Platform lift in Hall.

Main building

- Extension of Hall to car park and replacement of main wall with a folding screen to allow multi-function use of space;
- New classroom sited at current main entrance to the school and additional toilets added;
- Year 3 classroom extended across path and corridor created between Year 3 and 4 classrooms;
- Stud wall build across front of Year 4 classroom and additional windows added looking onto field;
- Classroom build adjoining front of Year 4 classroom;

Main building

- Entrance suite including Office adjoins new classroom and is sited to the top of the ramp;
- New lobby built to provide access to Caretaker's Room as new staff room;
- Staffroom and current Office converted into teaching spaces;
- Platform lift installed in Hall.

External changes

- Creation of new staff car park with disabled parking accessed off Trajan Walk;
- Creation of new accessibility ramp to access main building;
- Creation of new outdoor, hardstanding yard area with fencing and stairs to connect play areas.

Planning so far

- Agreed staffing protocol to ensure best current staff remain in the Partnership;
- Agreed staffing structure
 - Upper KS2 taught as separate Y5 and Year 6 classes with dedicated class teachers;
 - Consideration will be given to ensuring staff have the appropriate specialist skills if required;
 - Currently all PE in school is delivered by specialist teachers as well as French in Key Stage 2 and Music in Year 3;
 - No planned increase in support staff for September 2017;
 - Review on yearly basis.

Curriculum planning

- First Schools working with West Jesmond Primary School (Outstanding Teaching School);
- First and High School staff in process of setting up working parties to ensure innovative and engaging curriculum coverage and essential skill competencies leading to increased outcomes at all points in your child's educational journey across the Partnership;
- All Headteachers are meeting on at least a monthly basis with the school changes as a single agenda item.

Sports' Provision

- Heddon has regained Silver Sports' Mark for second year and is working towards Gold;
- All classes in school receive PE from specialist teachers;
- Working closely with Ponteland and Morpeth Schools Sports Partnership to provide appropriate sporting opportunities such as Football teams;



Pupils at the village's St Andrew's First School lined up for the first of a series of games involving the Ponteland Partnership of Schools, two teams playing against their neighbours at Ponteland First School.

The mixed gender 7-a-side team played a game each this week, and it is hoped the friendlies will act as a catalyst in starting a competitive league between the local schools in the next academic year. The games have been organised by the Morpeth and Ponteland School Sport Programme. Damien Dimmick, of the programme, said: "It's the start of something good at the schools, and it is great to see the enthusiasm of the children and parents. Lynda in the office has worked there for 31 years and said she can't ever remember Heddon having a football team!" (Hexham Courant)

Opportunities for children to work together

- Key aim is that all Primary age pupils will have the opportunity to visit the other Primary schools and build relationships with others prior to the move to Secondary;
- Joint residential visits both in this country and abroad;
- Topic related visits;
- Sports – festivals and competitions;

Bridging to Secondary School

- Bridging will begin in Year 4 each year and will continue through Years 5 and 6;
- Joint events with other Primary schools and working with Secondary School staff and students – such as the Choral event at The Sage;
- Immersive days at the Secondary School including Food Technology, Science, Computing, Drama etc where children will work with Secondary School staff and students using the specialist facilities the Secondary School have;

Bridging to Secondary School

- Sports competitions and events;
- Staff in both Primary and Secondary Schools are already working together building upon the good practice which currently exists where staff move between schools to ensure children are settled and meeting their full potential;

Next steps

- Planning application in process of submission;
- Bridging events to Secondary to begin in November 2016;
- Staff appointments to be completed in Spring term in line with Staffing Protocols;
- Building work will begin in the Spring term and will be completed by September 2017